



**ALASKA DIVISION OF HOMELAND SECURITY &  
EMERGENCY MANAGEMENT**  
SITUATION REPORT 24-094 • April 3, 2024



Toll-Free 1.800.478.2337

Anchorage Area 907.428.7000

SEOC 907.428.7100

<p><b><u>SEOC Preparedness Level</u></b> Level 1 – Routine Operations.</p>	<p align="center"><a href="http://ready.alaska.gov">http://ready.alaska.gov</a></p>	<p><b><u>National Terrorism Advisory System:</u></b>  <a href="#">Read the NTAS Bulletin here</a></p>
<p><b><u>Maritime Security (MARSEC)</u></b> Level:1- Minimum Appropriate Security Measures</p>	<p><b>WHO Novel Coronavirus Pandemic (COVID-19):</b> <a href="#">2019 Novel Coronavirus</a></p>	<p><b><u>Alaska Military Installation Force Protection Level:</u></b> FPCON Bravo</p>

(Significant changes from previous situation reports are red.)

**Significant Issues:**

**Bering Sea Severe Weather-**

Yesterday, SEOC contacted the National Weather Service for an update on the severe weather system that is expected to make landfall Tuesday through Wednesday evening. No major updates reported last night to SEOC.

**Taiwan Earthquake-**

Last night SEOC monitored a magnitude 7.4 earthquake in Taiwan. SEOC monitored the event and there was no Tsunami risk to Alaska.

**State of Alaska Department of Health (DOH)**

The DOH stands ready to assist with all aspects of public health and, in the event of a public health emergency, is supported by the SEOC and other state departments as required.

For current information, see: <https://health.alaska.gov/dph/Pages/default.aspx>

<https://health.alaska.gov/dph/Emergency/Pages/prepared/default.aspx>

**NTAS Bulletin**

The U.S. Department of Homeland Security issued an updated National Terrorism Advisory Bulletin on May 24, 2023. The current and expired bulletins can be viewed at the below link.

<https://www.dhs.gov/national-terrorism-advisory-system>

**Travel Alerts and Conditions**

For current driving conditions, dial 511 or visit: <https://511.alaska.gov/>

**Barry Arm Landslide / Tsunami Risk**

For the latest information on the Barry Arm Landslide and Tsunami risk, click here:

<https://dggs.alaska.gov/hazards/barry-arm-landslide.html>

## Earthquakes

United States Geological Service (USGS) Earthquake Information: <http://earthquake.usgs.gov/>  
National Tsunami Warning Center: <http://tsunami.gov/>

## Alaska Volcanoes

**Great Sitkin** Alert Level: **Watch** and Aviation Color Code: **Orange**  
**Shishaldin** Alert Level: **Advisory** and Aviation Color Code: **Yellow**  
**Atka Volcanic Complex** Alert Level: **Advisory** and Aviation Color Code: **Yellow**

For Alaska Volcano updates, go to: <https://www.avo.alaska.edu/>

## Air Quality Index (AQI) Advisories

For the most up-to-date Air Quality Index Advisories:  
<http://dec.alaska.gov/Applications/Air/airtoolsweb/Home/Index>

## Spills of Oil and Hazardous Substances

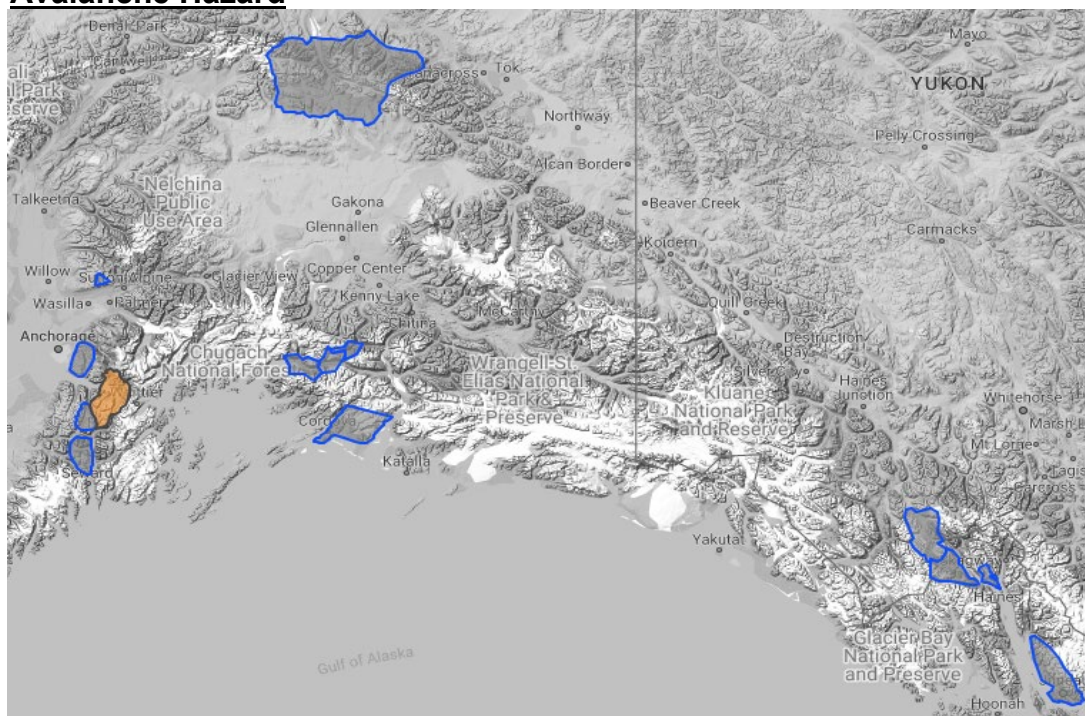
The Alaska Division of Environmental Conservation (ADEC) Spill Prevention and Response page is located at:  
<https://dec.alaska.gov/spar/>

## Alaska Cyber Security Information

State Employees may sign up for cybersecurity notifications and alerts at  
<https://oit.alaska.gov/security>

Cybersecurity and Infrastructure Security Agency (CISA)-Cybersecurity Services and Tools:  
[www.cisa.gov/free-cybersecurity-services-and-tools](http://www.cisa.gov/free-cybersecurity-services-and-tools)

## Avalanche Hazard

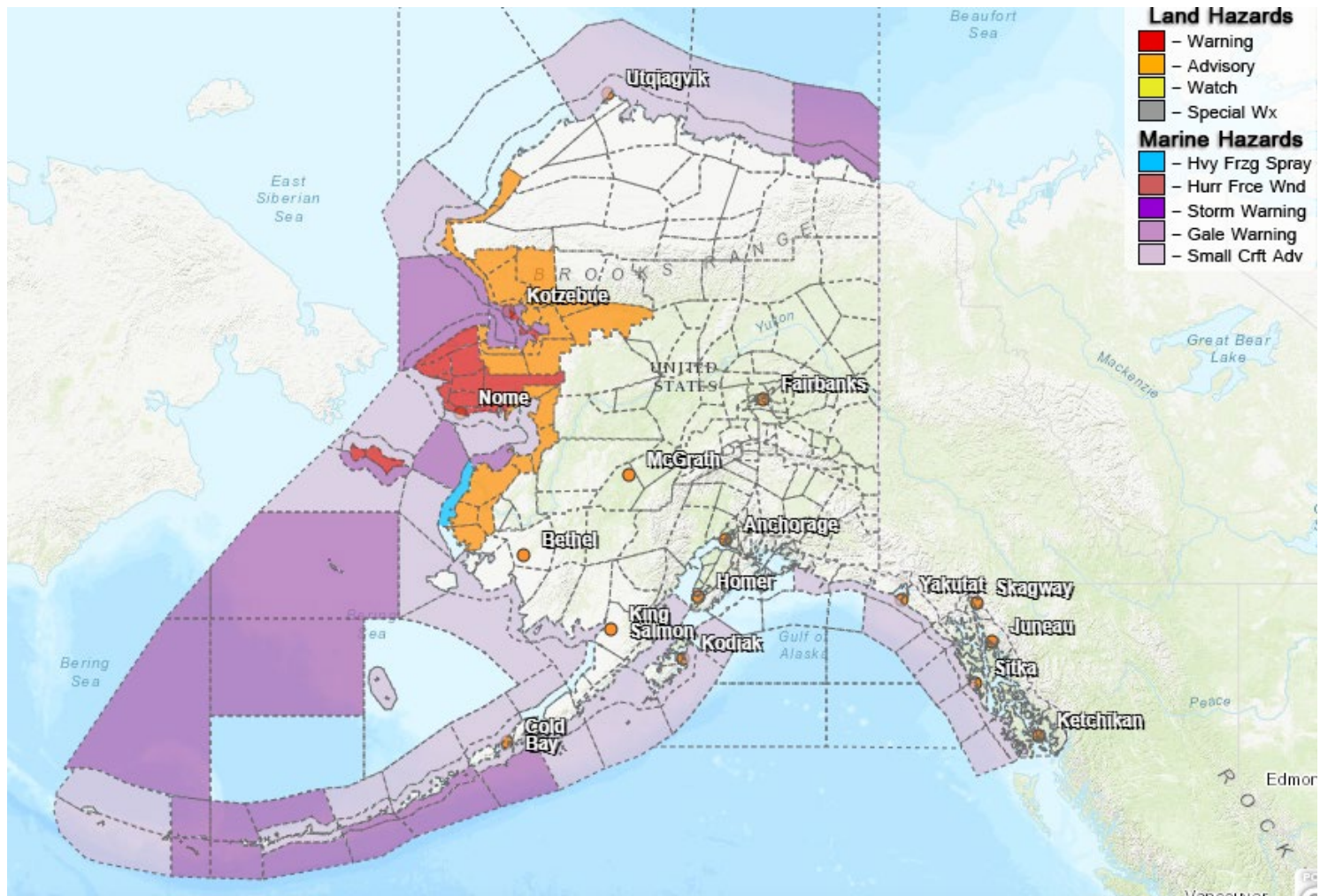


**Travel in avalanche terrain is not recommended. Avoid being on or beneath all steep slopes.**

**Turnagain Pass- Considerable above 1000', Moderate below 1000'**

For information and the most current avalanche conditions, go to <https://alakanow.org>

### Significant Weather:



### **Special Weather Statement:**

- **Bering Strait Coast, Southern Seward Peninsula Coast, Eastern Norton Sound and Nulato Hills, Yukon Delta Coast, St Lawrence Island, Kivalina and Red Dog Dock, Lower Kobuk Valley, Baldwin Peninsula, Northern Seward Peninsula, Shishmaref-** strong storm causing water to move onto shore, Ice Wednesday

### **Blizzard Warning:**

- **St Lawrence-**until noon today
- **Baldwin Peninsula-**until 7pm this evening

### **Winter Storm Warning:**

- **Southern Seward Peninsula Coast, Shishmaref, Bering Strait Coast-**until 6pm this weekend
- **Interior Seward Peninsula-**until 10pm this weekend

### **Winter Storm Advisory:**

- **Northern Seward Peninsula, Lower Kobuk Valley-**until Wednesday evening
- **Noatak Valley, Upper Kobuk Valleys, Yukon Delta Coast, Western Arctic Coast-**in effect until Thursday

For more information and the most current weather, Watches / Warnings / Advisories go to:  
<https://www.weather.gov/arh/>

**The Next Situation Report** will be **April 4, 2024**. A significant change in the situation or the threat level will prompt an interim report. This report is posted on the internet at <https://ready.alaska.gov/sitrep>.

To register for email distribution, go to <http://list.state.ak.us/mailman/listinfo/dhsem.situation.report>.  
Direct questions regarding this report to the SEOC at 907-428-7100 or [seoc@alaska.gov](mailto:seoc@alaska.gov).